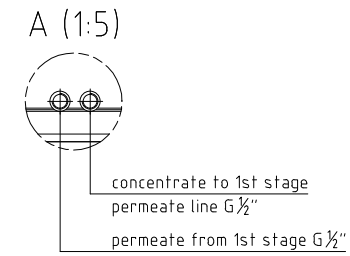
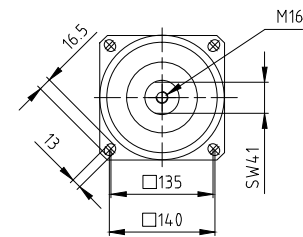
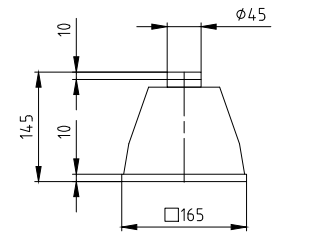


shock mount (1:5)
type: VULKAN DMR HD-55/MA-45



● estimated centre of gravity
estimated dry weight: ~590kg
estimated operation weight: ~700kg

0	15.06.2020	Issued for proposal	F.P.	E.P.
Rev.	Date	Description	Drawn	Approved
EP Water Srl Via Isocorte, 16 16164 Genova GE		LAYOUT RO 510 PT02-10S, 1st stage	Project: ASW Vessel "ABU DHABI" Class	
Dwg type: DWG			Scale: ---	Size: --
Dwg. nr. 612.B102484A-1C		Rev. 0		

Please treat this drawing as confidential document in order to estimate.
 The copyright in this drawing is the property of EP Water Srl.
 This drawing, including its content, is the property of EP Water Srl.
 It is not to be used, copied, reproduced, or disseminated without the written consent of EP Water Srl.

THIS DRAWING AND DESIGN SHOWN HEREIN IS THE PROPERTY OF EP WATER AND MUST NOT BE USED BY OR REPRODUCED FOR THIRD PARTY.